



***Petro Poolad***

Supplier of Oil, Gas, Petrochemical  
and Mining Equipment

## CATALOG OF PRODUCTS



Pipe



Flange



Fitting



Gasket



Branch Connection



Valve





Our company is a leading organization to provide comprehensive agency services, business development and sponsorship aid to its clients.

to date, we have worked with a wide range of customers from different parts of the world, providing oil and gas, petrochemical, mining or any other associated industrial equipment. We are able to provide a high quality solution for your company in which the needs of our customers are satisfied from start to finish.

Our years of association with varied internationally recognized contractors, equipment manufacturers and service providers with proficiency is the cogent reason why Petro Poolad Kohen Arya has become one of the most trusted names specifically in spare parts distribution and supply in energy industries. the commitment of P.P.K.A to product excellence and client service has led to success and growth and this has made us a distinctive company. Today, the company is able to provide manufactured goods throughout the Middle East, USA and Europe.

## Our Categories

- PIPE / CASING & TUBE
- BUTT - WELD & FORGED FITTING
- FLANGE
- VALVE
- GASKET FOR FLANGE
- STUD BOLT, NUT & WASHER
- STEEL STRUCTURE
- TABLE OF MATERIAL SELECTION FOR PIPING MATERIAL

## Our Services



### Consulting & Engineering

We provide engineering services to assist project owners in the development and delivery of capital projects.

Our engineers and technicians have an exceptional track record of success in the design, fabrication, and commissioning of equipment for various applications and industries.



### Production & Supply

Procurement of the market through the provision of high quality products at competitive prices are our skills. We try our best to provide a complete customer satisfaction on our services by continuous refinement of our manufacturing technical ability.

We have always strengthened and empowered the foundation of our organization by increasing our employees' efficiency through training and motivating them to be able to operate comprehensive service.



### After Sales Services

The Key to P.P.K.A's success and growth has been its aftercare and guarantee service. The increasing range of products offered by P.P.K.A company always comes with the added benefit of being technically supported by qualified experts.





## PIPE/CASING & TUBING

STAINLESS STEEL, CARBON STEEL

**Type of Production** SMLS, ERW, EFW, SAW, SSAW, DSAW

### Material & Grade

APL 5L, PSL1, PSL2	Gr.B UP to X80
APL 5CL, PSL1, PSL2, PSL3	All Grade
ASTM A53 & ASTM A106	Gr.B
ASTM A179 & ASTM A192	Gr.C
ASTM A213 & ASTM A312	Gr.304, 316, 321 (L-H)
ASTM A333 & ASTM A334	Gr.6
ASTM A335	Gr.P1, P2, P5, P7, P9, P11, P22
ASTM A672	Gr.C60, C65, C70
AWWA C200	Gr. UP to St44



### Dimension

Outside Diameters (OD)	6~114 mm
Wall Thicknesses (WT)	0.8~15 mm
Nominal Pipe Size (NPS)	1/8"~120"
Schedule (SCH)	10~XXS

### Sure Service

Nace MR0175, MR0103, HIC & SSC Test

### Coating

Normal or Heavy Bitumen Coating  
Polyethylene, Epoxy Resin Coating  
Sandblasting, Priming, Pickling, Oiling & Etc.  
Hot Dip Galvanize Coating (ASTM A120)



### Certificate

By request, Certificate Showing Chemical Analysis and Mechanical Test been issued  
(EN 10204/3.1B – EN 10201/3.1B – DIN 50049/3.1B)



## BUTT-WELDING FITTING

STAINLESS STEEL / CARBON STEEL

ELBOW (45, 90, 180) LR, SR - TEE (EQ, RED) - CAP - REDUCER (CON, ECC) - STUB END

**Standards** ASME B 16.9, B16.25, B16.28, NACE MR0175

**Material** ASTM A234 Gr.WPA/B, WP22  
ASTM A403 WP304, WP309, WP310, WP316, WP321 (L-H)  
ASTM A420 WPL3, WPL6, WPL9  
ASTM A860 WPHY X42-X70

**Wall Thickness** SCH 10 to XXS Carbon Steel  
SCH 5S to 80S Stainless Steel

**Size** 1/2" UP to 56"



## FORGED FITTINGS

STAINLESS STEEL / CARBON STEEL

ELBOW(45, 90) - TEE - REDUCER - COUPLING - CAP - UNION - BUSHING - PLUG - NIPPLE  
THREDOLET - WELDOLET - SOCKOLET - LATROLET - ELBOLET - LATROLET - ELBOLET - NIPOLET

**Standards** ASME B16.11, BS 3799, MSS SP44

**Material** ASTM A105/105N, A181  
ASTM A182 F304, F309, F310, F316, F321 (L-H)  
ASTM A182 F1, F2, F5, F9, F11, F12, F22  
ASTM A350 LF1, F2, F3

**Class** 200#, 3000#, 6000#, 9000#

**Size** 1/4" UP to 4"





# FLANGES

STAINLESS STEEL / CARBON STEEL

- WELDING NECK (W N)
- BLIND
- SLIP-ON (S O)
- ORIFICE
- SOKET WELD (S W)
- LONG WELDING NECK (LWN)
- LAP JOINT
- REDUCING FLANGE
- THREADED FLANGE
- SPECTACLE AND SPACER



(W N)



BLIND



(S O)



(S W)



(L J)



(THR)

## Norm Ends

FF - RF - RTJ

## Dimension Standards

ANSI B16.5  
ANSI B16.36  
ANSI B16.47 Series A MSS SP-44  
ANSI B16.47 Series B API STD 605  
BS 3295

## Material

ASTM A105/A105N  
ASTM A182 F304, F309, F310, F316, F321 (L-H)  
ASTM A182 F1, F2, F5, F9, F11, F12, F22  
ASTM A350 LF1, LF2, LF3  
ASTM A694 F42, F46, F56, F60, F65  
ST.37 C22.8

## Rating

PN10 UP to PN100 - Class 150 Up to API 5000

## Wall thickness

SCH 10 to XXS

## Size

1/2" UP to 56"



# VALVE

GATE - GLOBE - CHECK - NEEDLE

Reference Standard API, BSI, ASME, ANSI, ASTM, DIN, MSS, NACE

## CAST STEEL

Structure	Construction: Bolted, Union or Welded Bonnet, OS & Y End Connection: Flange Raised Face, Butt Weld, RTJ Operation: Hand Wheel, Gear, Electric, Pneumatic, Hydraulic
Size	1/2" UP to 56"
Pressure Rating	ANSI 150# UP to API 5000
Body	: ASTM: A216 Gr.WCB, WCC ASTM: A217 Gr.WC1~WC9 ASTM: A352 Gr.LCB, LCC ASTM: A351 Gr.CF3, CF3M, CF8, CF8M
Trim	13%Cr, 304, 316, 321(L-H), F-51, Monel and etc...



GATE



GLOBE



CHECK



NEEDLE

## FORGED STEEL VALVE

Structure	Construction: Bolted, Union or Welded Bonnet, OS & Y End Connection: Socket Weld, Threaded (NPT), Butt-Welded, RTJ Operation: Hand Wheel, Wrench Operation
Size	1/4 "up to 2
Pressure rating	ANSI 800# UP to 2500#
Body	ASTM: ASTM A105/A105N ASTM: A182 Gr.304, 316, 321 (L-H) ASTM: A182 Gr.F11, F22 ASTM: A350 Gr.LF2
Trim	F6, 304, 316, 321 (L-H), F51, Monel and etc...



FORGED GATE VALVE



FORGED GLOBE VALVES



FORGED CHECK VALVES



FORGED NEEDLE VALVES





# VALVE

BUTTERFLY - PLUG - BALL

Reference Standard API, BSI, ASME, ANSI, ASTM, DIN, MSS, NACE

## BALL VALVE

Structure	Construction: All Welded Body, Two & Three Pieces, Full & Reducer Bore End Connection: Flange Raised Face, RTJ, Butt Weld and etc... Operation: Lever, Gear, Electric, Pneumatic, Hydraulic and etc...
Size	1/2" UP to 24"
Pressure Rating	ANSI 150# UP to 5000
Body	ASTM: A216 Gr.WCB, WCC ASTM: A217 Gr. WC1, WC5, WC6, WC9 ASTM: A352 Gr.LCB, LCC and etc... ASTM: A351 Gr.CF3, CF3M, CF8, CF8M
Trim	13%CR, 304, 316, 321 (L-H), 347, F51, Monel and etc...



## BUTTERFLY VALVE

Size Range	2" UP to 60"
Pressure Raiding	PN10 to PN100 ANSI 125 to 600
Design Specification	API 607, API 609, BS 5155
End Connection	Wafer Pattern, Semi-Lugged, Fully Lugged, Flanged
Operation	Level Gear, Electric, Pneumatic, Hydraulic
Body Materials	Cast Iron DIN GG25, Ductile Iron DIN GGG40 Carbon Steel ASTM A216 Gr.WCB, WCC Stainless Steel ASTM A351 Gr.CF3, CF3M, CF8M Low Temperature Carbon Steel ASTM A352 Gr.LCB, LCC Aluminum Bronze ASTM A148
Disc Materials	GGG40 Coated, 304, 316 (L-H), ASTM B148



## PLUG VALVE

Structure	Construction: Pressure Balance, Standard & Lubricated Type End Connection: Flange, Socket Weld, Butt Weld or Screw Operation: Wrench & Gear Operated
Size	1/2" UP to 24"
Pressure Rating	ANSI 150# UP to 5000
Body	ASTM: A216 Gr.WCB, WCC ASTM: A351 Gr.CF3, CF3M, CF8, CF8M ASTM: A352 Gr LCB, LCC and etc... ASTM: A352 Gr LCB, LCC and etc...
Trim	Steel, CF8, CF8M



# GASKET FOR FLANGE

## Non-Metallic Type

Compressed Fiber, Aramid Fiber, Glass Fiber, Elastomer, Teflon (PTFE)  
Nitrile Rubber (NBR) Graphite

ASME B16.21 Covers Types, Size, Materials, Dimension and Tolerances for  
Non-Metallic Flat Gasket

## Semi-Metallic Type

Spiral Wound, Cam Profile and Metal-Reinforced  
ASME B16.20 Covers Types, Size, Materials, Dimension and Tolerances for  
Semi-Metallic Gasket

## Metallic Gasket

Ring Type Joint (RTJ)  
O-Ring Type Oval and Octagonal  
RX & BX for Pressures over 69 MPa / 690 bar (10,000si)

## Size

1/4" UP to 56"



*Flexitallic*



# STUD BOLT, NUT & WASHER

Stud Bolt, Eyebolt, U-bolt, Square Bolt, Hex Bolt, Anchor Bolt and etc...

Hex Nut, Tee Nut, Heave Hex, Square, Round and etc...

Flat Washer, Spring, Lock, Special & Taper

## Materials

ASTM A193 Gr.B7, B6, B16, B8, B8T

ASTM A194 Gr.2H,2,4,7,8M

A320 Gr.L7, B8 and etc...

## Coating Type

Zinc Plating, Electro zinc Chromatid

Hot Dip Galvanized, Black Oxide

Cadmium Plating, PTFE

## Size

3/8" UP to 4"



**Fleet**  **Farm.**





# MATERIAL FOR FITTING, FLANGE & PIPE

## Material Selection for Fitting, Flange and Pipe Commonly Used

Material	Plate	Pipe	EFW /Pipe	Tube	Casting	Forging	Wrought Fitting	Clad
Carbon Steel	A285	A53	A671	A214	A216	A105 A181 A266	A234	-
Killed Steel	A515 A516	A106	A678	A179	A216	A105 A181 A266	A234	-
9Cr-1MO	-	A335	-	A199 A213	A217	A182 A336	A234	-
TP304	A240	A312 A376	A358	A213 A249	A351 A744	A182 A336	A403	A264
TP304L	A240	A312 A376	A358	A213 A249	A351 A744	A182 A336	A403	A264
TP316	A240	A312 A376	A358	A213 A249	A351 A744	A182 A336	A403	A264
TP316L	A240	A312 A376	A358	A213 A249	A351 A744	A182 A336	A403	A264
TP321	A240	A312 A376	A358	A213 A249	-	A182 A336	A403	A264
TP347	A240	A312 A376	A358	A213 A249	A351 A744	A182 A336	A403	A264
TP310	A240	A312	-	A213 A249	A351	A182 A336	A403	A264
Inconel 600	B168	B167 B517	-	B163 B516	A744	B564 B166	B366	A265
Incoloy 800	B409	B407 B514	-	B163	-	B564 B408	B366	A265
Alloy 20	B463	B464	B474	B468	A351 A744	B462	B366	A265
AL Bronze	B171 C61400	-	-	-	-	-	-	B432
Monel	B127	B165	-	B163	A744	B564 B164	B366	A265
Hastelloy B	B333	B619 B622	-	B622 B686	A494	B335	B366	A265
Hastelloy C	B575	B619 B622	-	B622 B686	A494	B574	B366	A265
Titanium	B265	B377	-	B338	B367	B381	B363	-

\* Material can also be supplied according to ASTM, ASME, ANSI, APL, BS, ISO, DIN, NACE and other international specifications.

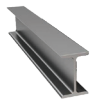
\* For sizes, Materials and Wall Thickness please refer to our pipes listed or contact our offices we will be only too pleased to assist you.



# STRUCTURAL STEEL GRADE DESIGNATIONS

ACCORDING TO EN-10025 & EN-10027

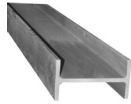
According to EN-10027 : EN10025-2:2004, EN-10025-4:2004



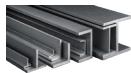
HEA Beams



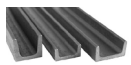
HEB Beams



HEM Beams



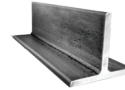
IPE and INP



UNP and UPE



Angle Steel



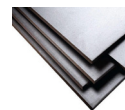
TEE Steel



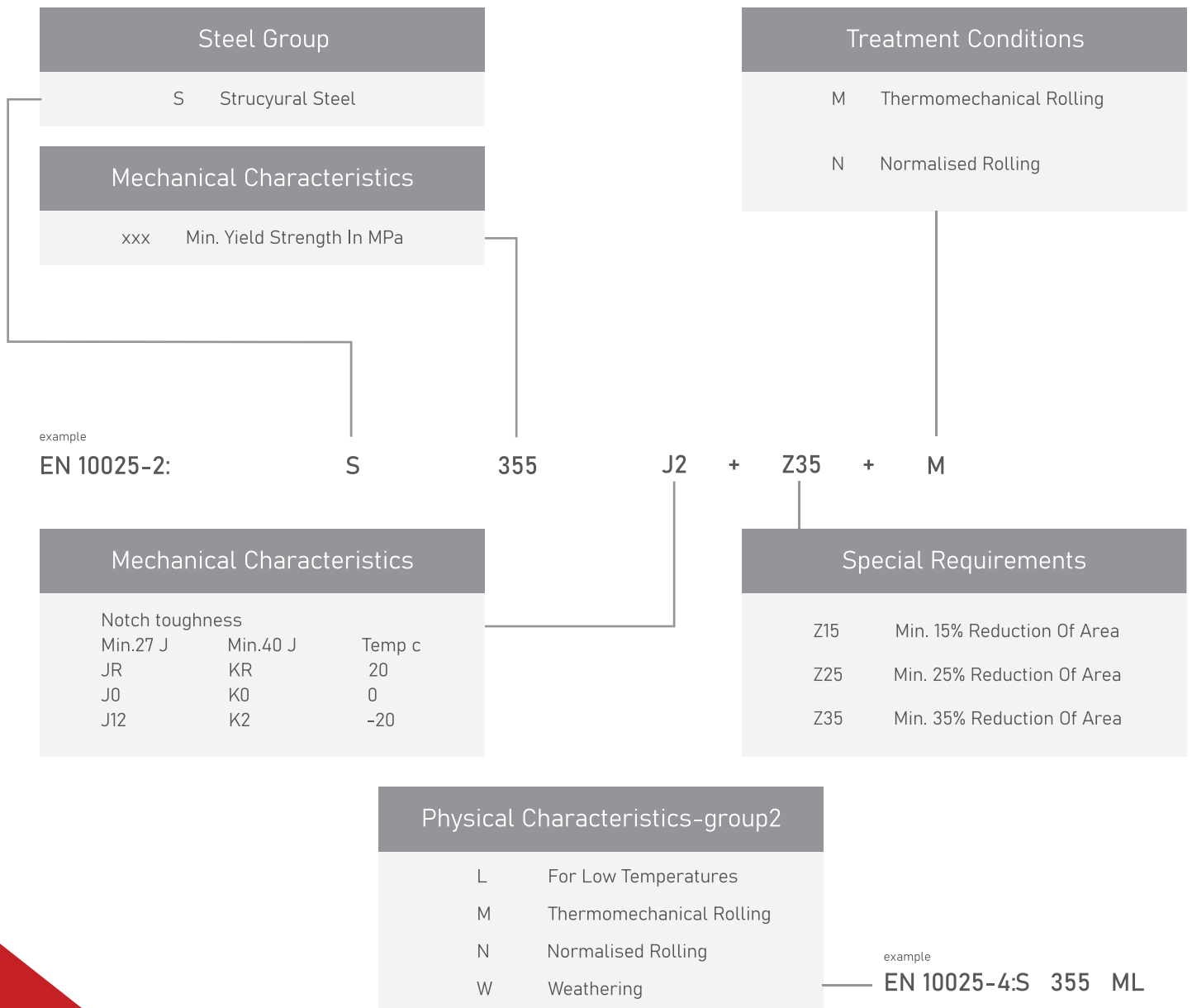
Round and Square



Flat Steel



Plate







# STRUCTURAL STEEL GRADE DESIGNATIONS

ACCORDING TO EN-10025 & EN-10027

## Structural el grade designations according to EN 10025 EN 10027

The latest European Standards incorporate numbers and letters which identify the Properties of the various grades within the Standard. A typical Specification example might be EN 10025: S275J0H.

EN indicates that it holds the status of a European Standard.  
10025 indicates the number of the relevant Standard.

Next is a letter denoting the type of steel followed by a number, being the characteristic Yield in Strength in N/mm<sup>2</sup> or the specified Minimum Tensile Strength in N/mm<sup>2</sup>

'G' = Steel Castings

'S' = Structural Steels

'P' = Pressure Vessel Steels

'L' = Line pipe Steels

'E' = Engineering steel

'B' = Steels for Reinforcing Concrete

'Y' = Steels for prestressing concrete

'R' = Steels for or in the form of Rails

'H' = Steels for Cold Rolled Flat Products of high strength steels for Cold Forming

The Number = minimum yield strength for smallest thickness

The Number = minimum yield strength for smallest thickness

The Number = minimum yield strength for smallest thickness

The Number = minimum yield strength for smallest thickness

The Number = characteristic yield strength

The Number = minimum tensile strength.

The Number = minimum tensile strength.

The Number = characteristic yield strength

'D' = Flat Products for Cold Forming (except H)

Followed by 'C' for Cold Rolled 'D' for Hot Rolled products for direct Cold Forming and 'X' for non specified rolled condition

'T' = Tinplate Products

'M' = Electrical Steels.

'JR' = Indicates that the Charpy Impact Test was conducted to 27 joules minimum at room temperature

'J0' = Indicates that the Impact Test was performed to 27 joules minimum at 0 °C

'J2' = Indicates that the Impact Test was performed to 27 joules minimum at -20 °C

'K2' = Indicates that the Impact Test was performed to 40 joules minimum at -20 °C

'G3' = Indicates delivery conditions are at the manufacturer's discretion

The last letter, if applicable:

'H' = Indicates Hollow Section.

'L' = Indicates Qualities with specified minimum values of impact energy at a temp. of -50C.

'M' = Indicates Thermomechanically rolled feedstock material

'N' = Indicates Normalized or Normal Rolled feedstock material.



021-22139232,3  
021-22118052



info@petropoolad.com  
www.petropoolad.com



Unit 12, 14<sup>th</sup> floor, Sahand building, Second  
peivand St., Farhang Sq., Sa'adat abad, Tehran, Iran